

APF 3C-DC EVO >



Frame size 3
Up to 5,000 lpm
at 8 bar
max. 16 bar

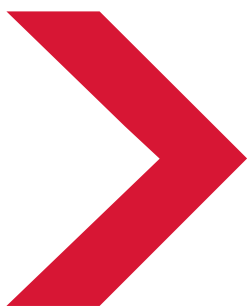
Light, compact and modular design: the new generation of the APF 3C-DC EVO monitors is perfect for all uses – not only on vehicles >



EVO
MORE
COMPACT AND
EFFICIENT!

**MORE PERFORMANCE,
LESS WEIGHT –
THE NEW EVO GENERATION.**





INCREASED PERFORMANCE WITH COMPACT DESIGN
AND REDUCED WEIGHT – THE NEW MODULAR GENERATION
APF 3C-DC EVO IS PERFECT FOR USE ON THE **LATEST
GENERATION OF VEHICLES**, AND OFFERS THE OPTIMAL
SOLUTION FOR ANY APPLICATION.

The Alco PowerFighter monitors APF 3C-DC EVO are optimized for use as a roof or bumper monitor on the **latest generation** of airport crash tenders. While providing a **flow rate of 5000 lpm**, it is actually **5kg lighter** than previous Alco models.

APF 3C-DC EVO monitors are controlled from the driver's cab or the control station. This is achieved with 24V DC motors in combination with absolute encoders, which also allow contour bypassing, e.g. of light poles.



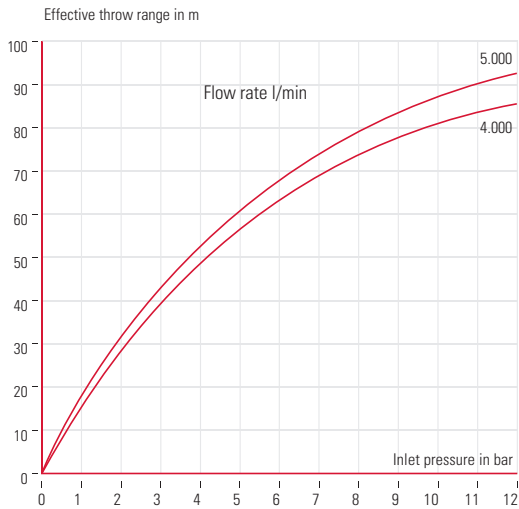
APF 3C-DC EVO monitors are mainly used as water and foam monitors. With their compact design they are perfectly suitable for tightly dimensioned areas of application. This expands the options in terms of usage and application, and makes the APF 3C-DC EVO a great solution for all applications – as extinguishing robots, turntable ladders, extinguishing arms and trailer systems. In the industrial area they are especially used for fire protection in factories and on waste-to-energy-plants.

The vertical swivelling, from -60° up to $+100^{\circ}$, and the rotation up to 360° ($\pm 180^{\circ}$), the stream shape and flow rate (depending on the nozzle) can also be controlled from inside the driver's cab. All operator displays include a monitor position indicator.

Maximum mobility is offered by the remote controls. With these the APF 3C-DC EVO monitors can be operated up to 1 km distance. Built-in manual override control is incorporated as standard.



THROW RANGE OF APF 3C-DC



All values apply in still air conditions and at a pipe work angle of approx. 25° bis 30° values for MZ nozzles in full jet position

The APF 3C-DC EVO is a modular system, this means a monitor can be specified to meet different applications, operational tactics and variable flow requirements.

The APF 3C-DC EVO is available with two different bodies, which only differ at the outlets and the maximum flow rate. For installation e. g. on the vehicle there are different flange sizes available.

- **Very compact – perfect for the latest vehicle generation**
- **Optimal configurability**
- **High throw ranges**
- **Variable stream shape change during use**
- **Variable flow rate control at the nozzle**
- **Programmable obstacle avoidance**
- **Monitor protected to IP standard**
- **Manual override in case of emergency**

With every available multipurpose nozzle, the stream shape can be adjusted while in use. The MZV model allows the variable adjustment of the flow rate at the nozzle. Apart from the discharge of water and foam mixtures (MZ/MZV/MZA/MZVS) it is also possible to discharge extinguishing powder (MZP/MZVP) in special applications.

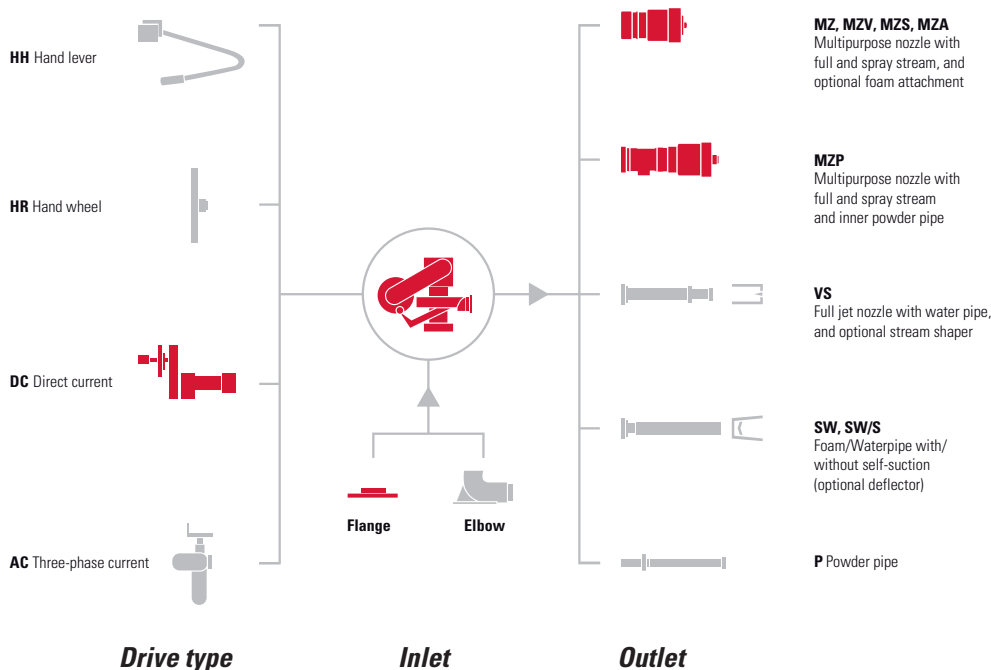
The new modular generation of APF 3C-DC EVO offers more performance and the optimal solution for every need!

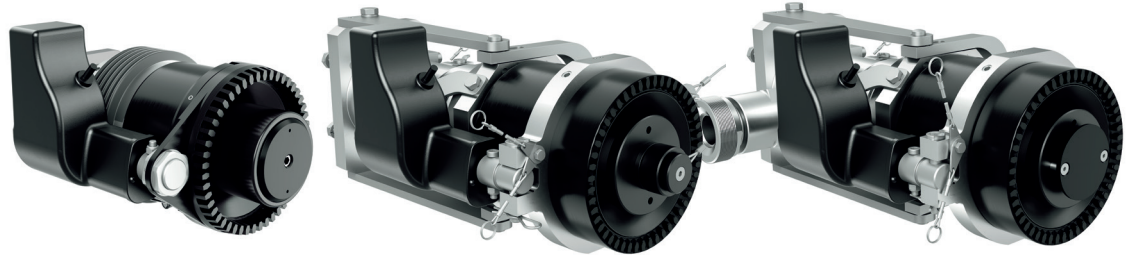
EVO
MORE
COMPACT AND
EFFICIENT!



Built-in manual override is standard.

The Alco modular system with the options for the APF 3C-DC EVO.





MZA - Automatic adjustment of working pressure and flow rate

MZVP - Powder output, variable change of flow rate

MZVS - Integrated foam liquid suction, variable change of flow rate

APF 3C-DC EVO

The **base model** of the APF 3C-DC EVO is available with electrical and manual drives. In combination with the wide range of pipe and nozzle equipment it can be used as a water, foam and powder monitor with a flow rate up to 4,000 lpm at 8 bar. **All nozzles offer a variable change of the stream shape.**

The choice is between the following nozzles with partly automatic adjustment of working pressure, extinguishing liquid, powder output, integrated foam liquid suction and variable change of flowrate while in use. Furthermore, there is a wide range of accessories and control units* for the APF 3C-DC EVO.

BASE UNIT

Inlet	Outlet	Flow rate [l/min]*	Working pressure max.	Swivelling range vertical	Swivelling range horizontal	Signal [mA]	Measurement LxWxH [mm]	Weight [kg]	AWG ID no.
Thread M95x2	Flange VK 110	4,000	16 bar	-60° up to +100°	±165°	4..20	437x307x380	ca. 15	208 081 35

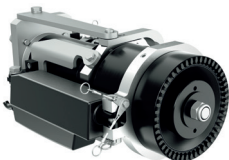
*Specified flow rates at 8 bar working pressure.

MULTIPURPOSE NOZZLES FOR THE APF 3C-DC EVO

Nozzle	Inlet	Flow rate max/min [l/min]	Additional functions	Signal [mA]	Measurements LxWxH [mm]	Weight [kg]	AWG ID no.
MZ 3000-DC	VK 110	3,000	Variable change of stream shape	-	219x192x185	3.7	313 904 40
MZV 3000/200-DC	VK 110	3,000/200	Variable change of flowrate	4..20	332x192x225	6.4	208 100 40
MZV 4500/500-DC	VK 110	4,500/500	Variable change of flowrate	4..20	405x189x258	13.5	121 323 34
MZA 4000-DC	VK 110	4,000	Automatic adjustment of nozzle at working pressure and amount of extinguishing agent	-	272x207x182	6.0	314 391 40
MZP 2200-10-DC	VK 110	2,200	Powder output of 10 kg/sec	-	257x189x185	4.3	314 399 34
MZVP 2500/250-9-DC	VK 110	2,500/250	Powder output of 9 kg/sec Variable change of flow rate	4..20	417x189x199	12.7	121 324 34
MZVS 2000/400-DC	VK 110	2,000/400	Integrated Foam agent suction Variable change of flow rate	4..20	400x302x195	13.1	121 385 34



MZ 3000-DC



MZV 4500/500-DC



MZP 2200-10-DC

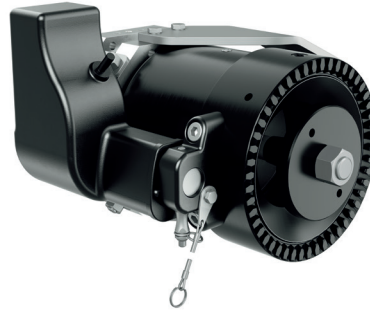
APF 3C-DC EVO XL >



EVO
MORE
COMPACT AND
EFFICIENT!



MZ 5000 - Factory adjusted flow rate



MZV 5000 - Variable change of flow rate

APF 3C-DC EVO XL

With its high **flow rate of 5,000 lpm** at 8 bar the APF 3C-DC EVO XL is ideally suited as a fire truck water/foam monitor. The compact design, low weight and high flow rate make it **a perfect fit for special fire fighting vehicles**.

The nozzle choices offer multiple fixed or variable flow rates. A wide range of accessories and control units* are also available for the APF 3C-DC EVO XL.

BASE UNIT

Inlet	Outlet	Flow rate [l/min]*	Working pressure max.	Swivelling range vertical	Swivelling range horizontal	Signal [mA]	Measurement LxWxH [mm]	Weight [kg]	AWG ID no.
Thread M95x2	Thread M95x2	5,000	16 bar	-60° up to +90°	±165°	4..20	443x311x380	ca. 15	208 080 35

*Specified flow rates at 8 bar working pressure.

MULTIPURPOSE NOZZLES FOR THE APF 3C-DC EVO XL

Nozzle	Inlet	Flow rate max/min [l/min]	Additional functions	Signal [mA]	Measurements LxWxH [mm]	Weight [kg]	AWG ID no.
MZ 5000-DC	Thread M95x2	5,000	Variable change of stream shape	-	281x210x177	6.9	121 412 34
MZV 5000/500-DC	Thread M95x2	5,000/500	Variable change of flow rate Variable change of stream shape	4..20	281x263x191	9.9	121 410 34

ALTERNATIVE INLETS FOR APF 3C-DC EVO AND EVO XL

Inlet	AWG ID no.
Flange DN80 PN16	310 036 34
Flange DN100 PN16	310 027 34
Flange Ansi 3" 150 lbs	310 313 34
Flange Ansi 4" 150 lbs	310 083 34



! **Other connection systems on request**

* Accessories and control units on the backside.



CAN control unit



Operating units



Wireless remote control



LED Spotlight kit



Flash light & Pressure gauge



Extensions

CAN CONTROL UNITS

FireCAN and CANopen systems provide control of all the main functions (nozzles, vertical and horizontal movement), water and foam water solution, oscillation and foam deflectors. Through potential-free

contacts, the control of obstacle avoidance, light mast avoidance and pump speed (rpm+ / rpm-) is possible.

CAN control units	Communication	LxWxH [mm]	Weight [kg]	AWG ID no.
Mobil C4	FireCAN, CANopen, Potential-free contacts	160x195x55	3.8	023 200 00
Mobil CS4	FireCAN, CANopen	140x94x43	0.5	023 245 00

OPERATING UNITS

	Functions	LxWxH [mm]	Weight [kg]	AWG ID no.
Big Joystick	8 illuminated push buttons for operation of all main monitor functions	106x106x300	3.7	023 207 00
Display with big joystick	Control of all important functions. Display with push buttons and position indicator. Push button joystick with 8 illuminated push buttons.	222x137x35 106x106x300		023 205 00
Display with small joystick	Control of all important functions. Display with push buttons and position indicator. Small joystick with 3 push buttons.	222x137x35 60x60x146		023 201 00
Wired remote control	With built-in display and small joystick, 10 m connection cable and carrying strap	428x170x172		023 202 00
Wireless remote control (WRC)	Joystick, push-buttons on front panel and side, STOP push-button, feedback signals via LED	178x262x182	2.0	023 210 XX*
Wireless push-button remote control	Push-button on front panel, STOP push-button	210x64x182	0.4	023 211 XX*

*The last two digits contain the country code of the country of use. Please state this in your enquiries and orders.

ADDITIONAL ACCESSORIES

	Functions	LxWxH [mm]	Weight [kg]	AWG ID no.
LED Spotlight kit VK 110	1 spotlight for long-distance, 1 spotlight for close-range illumination	678x85x163	3.5	314 400 34
LED Spotlight kit M95x2	1 spotlight for long-distance, 1 spotlight for close-range illumination	678x85x163	3.6	314 709 99
Flash light "yellow"	Rotating flash light		0.1	013 914 00
Pressure gauge	Pressure gauge 0-25 bar		0.1	014 609 00
Pneumatic extension DN 80	Lifting height 550 mm. Flow rate max. 4,000 l/min. incl. control valve	450x340x990	42.0	814 868 34
Electrical extension VIC 3"/Ansi 3"	Lifting height 550 mm. Flow rate max. 4,000 l/min	297x305x470	17.5	111 967 99



Would you like to request further information or a technical consultation? Call us!

+49 7340 91 88 98 -0

Simply send us your enquiry by email

awg-info@idexcorp.com

For an overview, visit our website

www.awg-fittings.com

Anyone who rescues lives and protects property day in and day out must be able to rely on their tools. Many of them opt for AWG and Alco products.

Two brands, which together offer one of the broadest ranges of premium equipment for emergency services.



AWG Fittings GmbH . Deutschland
A Unit of IDEX Corporation

© AWG Fittings GmbH, M2-028-F02-00-02/21
Subject to change without notice. Errors and omissions excepted.